



HOME » PROJECTS » PENTASPACE ADDS ANOTHER STRIKING ICON TO MUMBAI'S SKYLINE

PROJECTS

Pentaspaces adds another striking icon to Mumbai's skyline

The striking Chambers building in Andheri's bustling Chakala area is a product of 13-years of planning and execution by Mumbai-based architects, Pentaspaces.

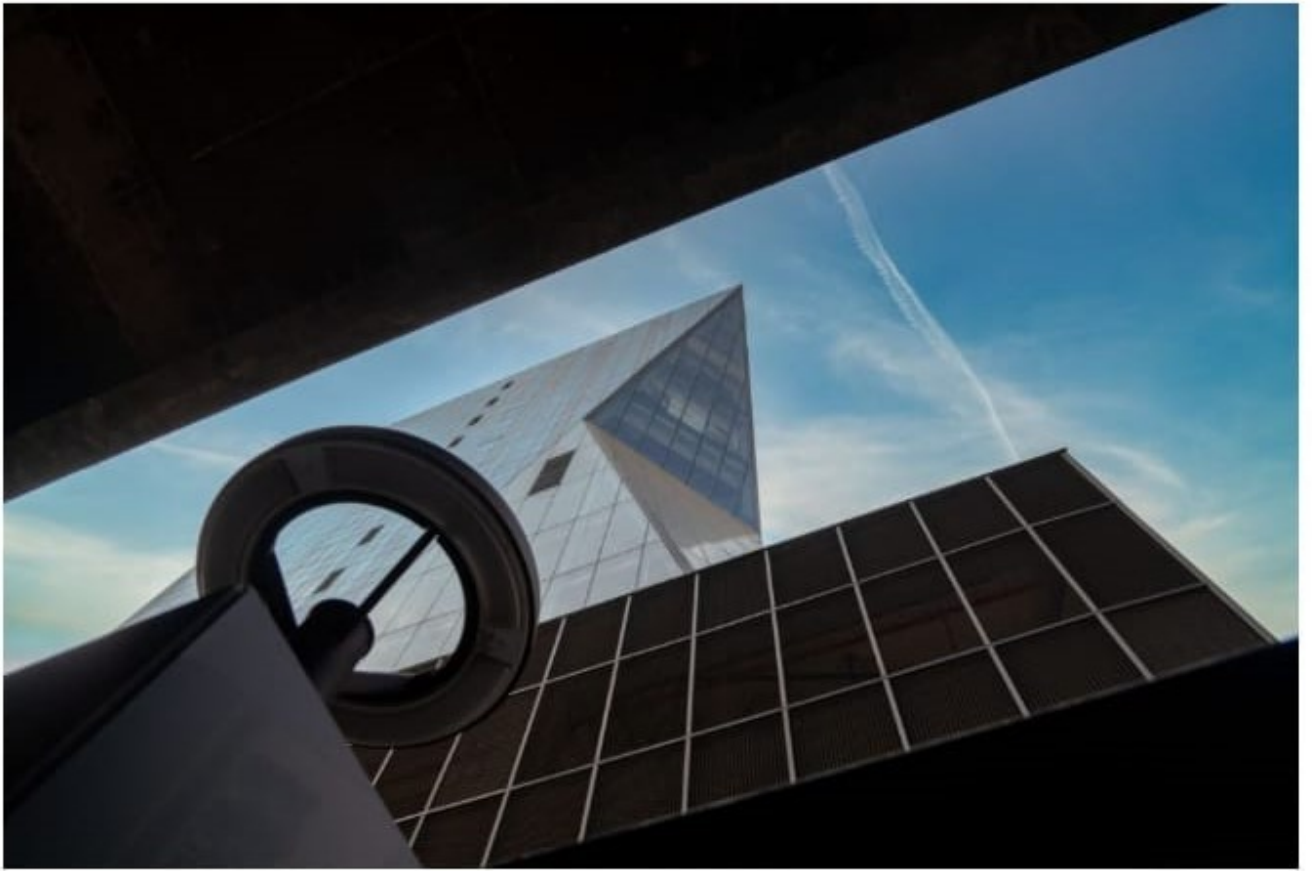


Once an old building with retail establishments, and then a storehouse for construction materials for the Mumbai metro project, Chambers is now an iconic commercial premises that has matured with its context.



The Metro Challenge

The project was first conceived in 2008, at a time when conversations around the Mumbai metro were taking shape, and Pentaspace was taking root as a young and independent design studio. The building form today embodies the story behind the evolution and the ambitious goals of the firm.



Chambers was completed in 2022, even as the design unfolded through the challenges of the metro construction along the adjoining road, modifications in municipal and construction rules, as well as a tight site and height restrictions.

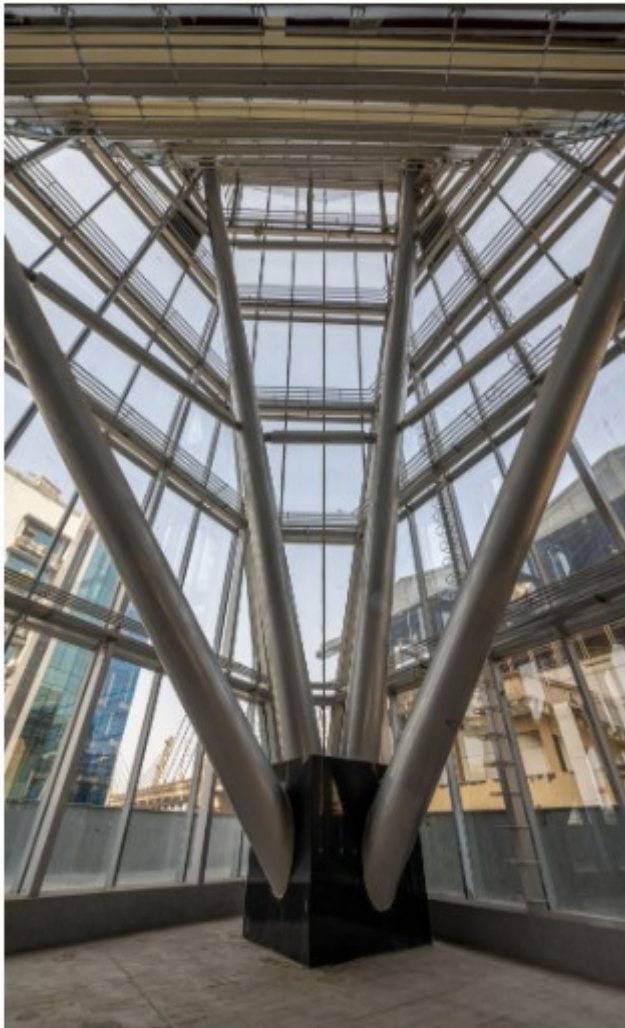
Creating a landmark

The site is an odd-shaped, curvilinear plot, positioned in the face of the Western Express Highway metro station. Owing to the latter, the frontage of the building was compromised, only to be salvaged by a unique design proposition, making the building a jewel of the area. The building elevation was turned diagonally north-west at a 45-degree angle to open it up to the busy highway.



A true diamond

The composite structure uses glass (high performance and DGU), concrete and steel in varying proportions and the building's crowning glory is the iconic diamond-shaped facade that encapsulates a grand double-height driveway that enables free circulation of traffic within the limited plot, and a breezy pyramidal atrium at the bottom. From here, extending angularly towards the sky is a 12-metre cantilever that forms the top half of the diamond. Differently sized floor plates averaging 5,000 sq ft support this configuration on the inside, increasing bit by bit into the freestanding triangular edge as one moves towards the higher floors.



Buzzing interiors

The building interiors have dedicated levels for retail, commercial and recreational activities. Two retail levels with a transparent facade and three parking levels with a digital facade for advertising take up the lower part of the building. The atrium is on the recreational floor and has a multi-cuisine restaurant. A multitude of offices take up every level until the 13th floor, topped with a terrace.

Glowing with light

Daylight streams into the atrium and the front visage at all hours, naturally illuminating the interiors. The service and circulation cores sit in the tapering south facade, absorbing the heat that flows in from this side. The north, east and west surfaces are glazed and designed as self-shading facades. After dusk, LED strips along the perimeter of the diamond bring it to life in the night sky.



Rife with just as many design opportunities as structural challenges, Chambers is the perfect example of an atypical project leaving an indelible mark on its surroundings, its occupants, and its creators.

Fact File:

Name of the project: Chambers

Location: Western Express Highway, Andheri, Mumbai

Area: 1,50,000 sq ft

Month and Year of Completion: April 2022

Design firm: Pentaspace