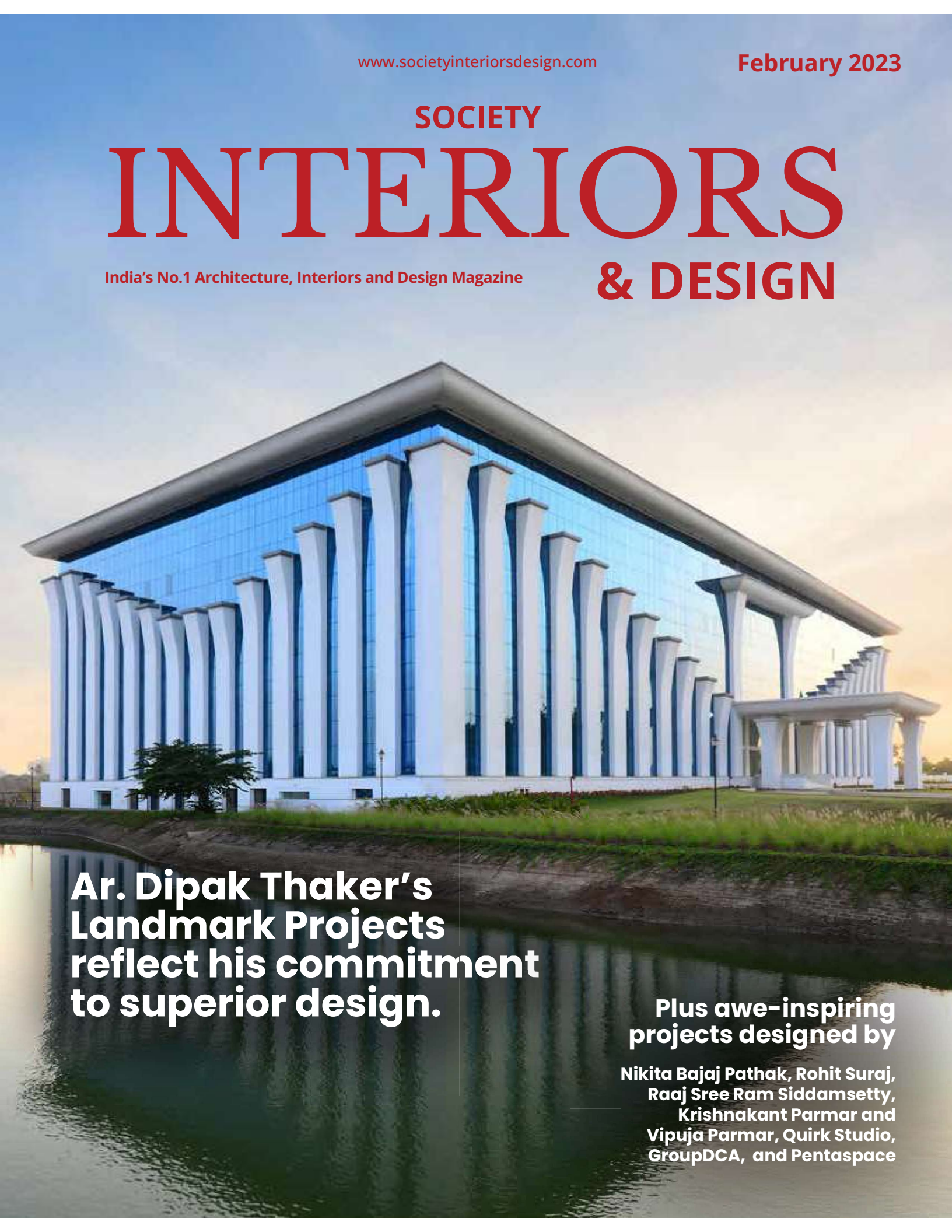


SOCIETY  
**INTERIORS**  
India's No.1 Architecture, Interiors and Design Magazine  
**& DESIGN**



**Ar. Dipak Thaker's  
Landmark Projects  
reflect his commitment  
to superior design.**

**Plus awe-inspiring  
projects designed by  
Nikita Bajaj Pathak, Rohit Suraj,  
Raaj Sree Ram Siddamsetty,  
Krishnakant Parmar and  
Vipuja Parmar, Quirk Studio,  
GroupDCA, and Pentaspac**

# Interactive and Dynamic Space

## Pentaspaces Design Studio's experimental designs lend a distinct identity to Atharv Office in Vile Parle, Mumbai.

Occupying a three-storey building in suburban Mumbai, Atharv is designed to encompass multiple offices within an office. Spread over an area of 7,000 sq.ft. this office is designed by Pentaspaces Design Studio. Spearheaded by Gaurav Sanghavi, Harsh Pote, Pragya Sanghvi, and Bhakti Pote this office is uniquely designed where every floor, and every space, is distinct in the way it fulfils its core function with a self-sustaining design and corresponding aesthetic. A workspace that was conceived and executed entirely during the Covid lockdown, Atharv exemplifies a sense of warmth and tamed luxury in a minimal yet modern workplace.

The office belongs to an up-and-coming residential developer looking to boost his reputation through a spatial transformation that would enable his prominent clients to envision his luxury residences and expertise through his own workspace. So, for Pentaspaces, this was an image-building exercise as much as an interior design project, which consequently led to some novel design experiments in materials, spatial configurations and decor. Interestingly, the inspiration came from the integrated design of Pentaspaces's own multi-storey office, which is nestled in a quiet, tree-lined residential colony. This became the starting point for the project, along with a preliminary client brief about the look, feel and function.

Explaining the design concept Bhakti Pote says, "In terms of design, the element of luxury steadily elevates as you move higher in the ground+3 structure, which has the main reception on the ground floor and an open terrace at the top. The well-established firm has a young team, most of whom occupy the industrial-style first floor that is peppered in grey, white and brown. The two directors occupy private lounges on the other two floors each, with their legal, business and sales teams in proximity. The first floor is modelled as a minimal, contemporary space with the use of bright colours and a fresh aesthetic. Coloured glass panels demarcate the various areas while injecting a healthy dose of brightness into the space."

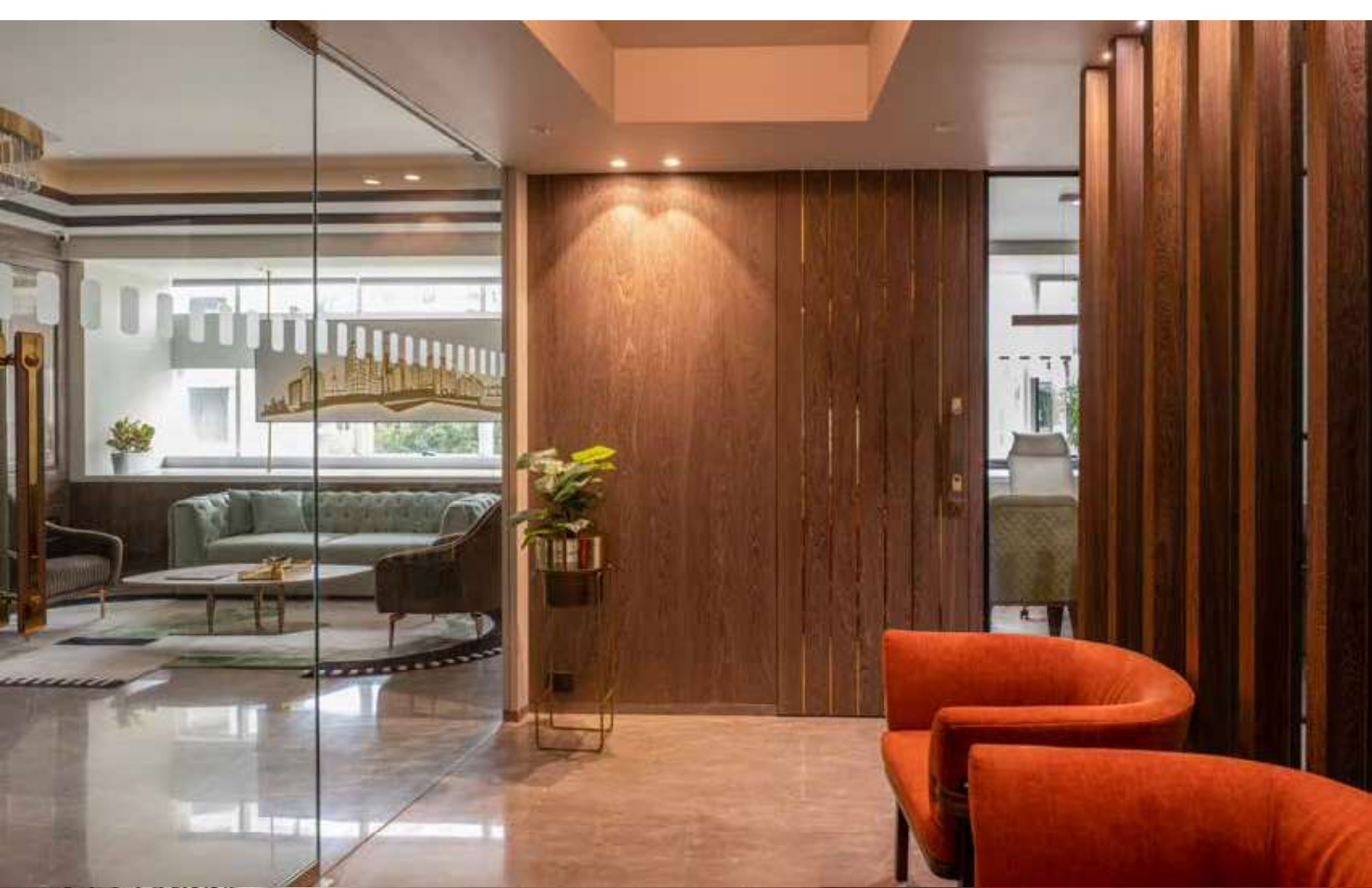








The opulent second floor is just as private as it is public. A curved wooden wall separates the lobby from the inside spaces, giving privacy to clients visiting the sales lounge and gallery. The interiors are comparatively more open, with glass partitions creating the illusion of spaciousness within the otherwise limited floor space. Since client meetings and project walkthroughs are mainly centred on this floor, the level of splendour has been upgraded using polished marble, glossy veneers and laminates, elegant wall panelling and classic fabrics. To abide by Vaastu and avoid any wastage of space, the service spaces such as the kitchen, recreational space and utilities have been relegated to the unused corners on every floor.





With the design foundation set in place, the furniture and accessories were the medium to infuse a bit more richness into the space. Customised desks and sofas, metal artworks, and personalised shelving systems were created for a bespoke touch, along with varied decor items on the window ledges throughout the office, including a laser-cut metal backlit panel depicting the developer's notable projects, a metal shelving and display case, suspended art frames, and potted plants.

The interior design aside, what truly makes the office inviting is the copious amounts of natural light that pours into the space despite the limited number of windows. It seeps into the farthest corners through the glass panels, illuminating the office from within. This simple move lightens the look and feel of the office, offering the perfect balance of form and function.

Photographs: Sagar Karnik