



August 4, 2023 | By: Editorial Team | INFLUENCERS



An aerial perspective of a large-scale residential development. The complex features several tall, modern apartment buildings with light-colored facades and dark window patterns. These buildings are arranged around a central green space that includes a swimming pool, a tennis court, and various landscaped areas with trees and walkways. The development is bordered by a wide road on the right side, which has a dedicated lane for bicycles. The surrounding area includes more green fields and distant infrastructure, suggesting a suburban or semi-urban setting.

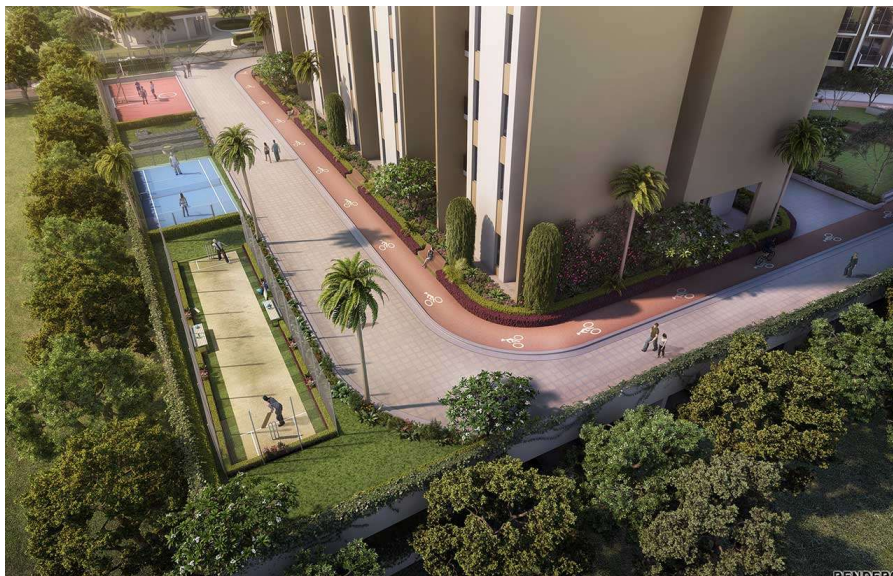
1

Read: [Vaissnavi Shukl: A Visionary Architect](#)



The buildings are oriented along the sun path and are chamfered from the corners to allow light penetration and cross ventilation in the courtyard creating a pleasant microenvironment. The funnel concept is used to design the courtyard between two buildings to maintain ambient temperature throughout the year. The service-core are introduced on the East-West Axis to avoid heat gain.

Gujarat thrives on community living. Community spaces such as retail, restaurants, and clubhouse are designed in the form of step-well to keep the ambient spaces cool in the arid heat of Ahmedabad. Sky gardens have been introduced at refuge floor levels, which help provide community and green spaces for maximum social gathering and thus create a sense of neighbourhood.



Read: [Anagram Architect's Stunning EKAANTA Is for Those Not In Hurry](#)

Specifications

Firm Name - Pentaspace Design Studio

Location: Mumbai, Maharashtra

Design Team - Ar. Gaurav Sanghavi, Ar. Harsh Pote, Ar. Pragya Sanghavi and Ar. Bhakti Pote.

Area: 40 Acres

Status of Project: Proposed/Unbuilt

Myth: Cutting trees reduces forest cover and thereby contributes to global warming.

Fact: Harvesting forests responsibly is essential to keep the forests healthy and growing.

WOOD FACTS
Busting myths about wood

35%
of world's certified forests are in Canada

218M
seedlings planted annually

41M
hectares of certified forests in B.C.

0.35%
of B.C. forests harvested yearly

Canadian Wood
www.canadianwood.in

For details click here



Since 1970

“YEH SIRF
APNI HI
CHABI SE
KHULTE HAI”

Rim Lock

Door Closer

Pad Lock

Furniture Lock

Mortise Handle

Click NOW
For More Info!

RELATED STORIES



MAY 8, 2023

A built form shouldn't be treated as a dead mass of bricks and concrete



AUGUST 4, 2023

Asia's Future Financial Hub - Gift City.



JUNE 6, 2023

Future of Architectural Trends

ABOUT US

BMR is projected to be India's fastest video news producer for architecture, design, construction and building materials industry. With tremendous growth in creation of video content and affordable data, preference for video content is on rise amongst users of all age group instead of reading a long article.



CONTACT US

ADDRESS

📍 No-204, RS Tower, B-1267,
Near Metro Pillor No, 156,
New Ashok Nagar, Delhi 110096

📍 [View on map](#)

CATEGORIES

