

SOCIETY
INTERIORS & DESIGNTM

www.societyinteriorsdesign.com

Special Feature on
Bathroom Tiles.

**Ar. Rahul Kadri Designs Contextually
Responsive, Sustainable, And
Environmentally Holistic Buildings**

Rinki Kotak, Divya Singhal, Swathy Sivaraman, Krish Kothari, Bhakti Pote & Pragma Sanghavi, Architect Narayan & Associates, Ajay Arya, Priyanka Khanna and Rudraksh Charan, Ninada Kashyap and Komal Mittal, Aparna Kaushik, Rajat Behl and Shrruti Behall, Rashi Bothra and Ruchi Gehani.

SOCIETY
**INTERIORS
&
DESIGN**

www.societyinteriorsdesign.com

Publisher: Magnate Publishing Private Limited

Consulting Editor: Swati Balgi

Contributer: Priya Prabhu

Graphic Designer: Syed Zaid Inamdar

Business Heads

National, West Zone: Sunil Khavnekar +91 9820303096 Preeti Nair +91 9892746767

North Zone: Ravi Roushon +91 9818198689

South Zone: Rekha Kambhoj +91 9845587253

East Zone: Ashim Banik +91 9830056642

Gujarat: Madan Menon +91 9898002522



Contents

Cover Story

Rahul Kadri's journey through various architectural projects, showcases a pledge to merging functionality with aesthetics, always with an eye towards sustainability. **10**

Lifestyle

This luxurious retreat designed for the doctor couple by 4th Dimension Architects is a visual treat. **22**

The Shahpura Residence in Bhopal, is a futuristic home that plays host to colour, culture and functionality. **28**

The Manjushree Manor, Bengaluru designed by StoreyBoard Design whispers secrets of luxury. **34**

KKD Studio has crafted a timeless creation by blending varied materials and muted palettes in this modern home. **36**

D'canvas Interiors in Bengaluru, have designed a sophisticated home drawing inspiration from Koi Pond Concept artwork. **42**

Workstation

The Ark Clinic designed by Pentaspace Design Studio stands as a true beacon of uniqueness. **48**

Architect Narayan & Associates have designed a modern office space for a consultancy engineering firm based in the UAE. **50**

Ar. Shashirekha, Chief Architect at Space Studio Chennai, has crafted a productive and functional corporate office for ABS. **56**

Kamdheni Realities designed by Homework Designs, stands out due to its eclectic charm. **62**

Décor tips

Society Interiors and Design shares expert opinion on how crafting a mandir enriches living spaces. **68**

Infocus

Lend your bathrooms a chic and modern makeover by choosing from these striking tiles designs. **76**

Store Profile

Radhika Dhawan has meticulously designed Woodage's new flagship store in Hyderabad **86**

Restaurant Design

La Panthera in Mumbai, seamlessly blends contemporary flair with old-world European charm. **92**

Product Section

The latest round-up of products, furniture and furnishing. **96**

Society Interiors & Design is published once every month by Magnate Publishing Private Limited, 501, La-creme CHS Ltd, Kondivita VLG, MIDC, Andheri(e), Near Akruti Trade Center, Mumbai, Maharashtra, India, 400059. Tel No: +91-993-0061-674. Editorial texts and illustrations are the copyright of the publishers of this magazine. No one may reproduce any material before permission is obtained in writing.

All disputes are subject to the exclusive jurisdiction of competent courts and forums in Mumbai (India) only.

2022 Copyright Magnate Publishing Private Limited.

Please address all your advertising, subscriptions and trade enquiries for to: Magnate Publishing Private Limited, 501, La-creme CHS Ltd, Kondivita VLG, MIDC, Andheri(e), Near Akruti Trade Center, Mumbai, Maharashtra, India, 400059. Tel No: +91-993-0061-674. Email: info@magnatepublishing.in

MAGNATE PUBLISHING IS NOT RESPONSIBLE FOR ANY CLAIM MADE BY THE ADVERTISER

White Symphony

The Ark Clinic in Mumbai designed by Pentaspace Design Studio stands as a true beacon of uniqueness by melding two medical fields in one distinctive space

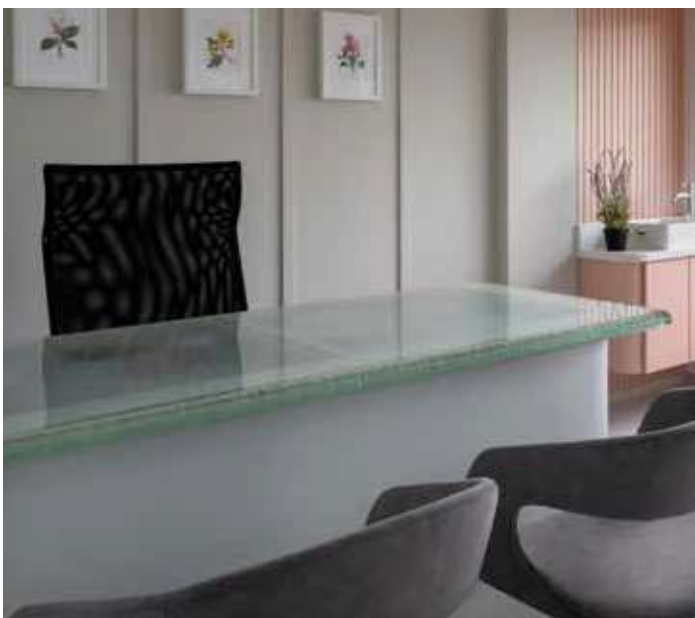
The Ark clinic in Mumbai is based on a simple philosophy of melding two medical fields in one distinctive space. Designed by Pentaspace Design Studio, the unique design concept beautifully represents the specific and separate needs of a pair of married doctors and their fields of practice, both individually and jointly.

Explaining the design process, Bhakti Pote, Director, Pentaspace Design Studio, says, "While the specializations and patients differ, the idea of providing visitors with comfort and relief in a practical and utilitarian space is the core of the design concept. Situated in a commercial building, the clinic is an extension of another similar space on a lower floor of the same building. Stripped down to its bare bones, this 2,000 sq. ft. area had to be assembled sectionally while some parts of the space continued to be used for medical procedures."

The clinic belongs to a gynecologist and a spine specialist, and this comes through the very second you step through the elevator into the clinic. Two curved walls encase the reception area, one representing the curve of the spine and the other of the womb. The space then fans out into a horizontal waiting room with light spilling in through the wide windows, where visitors can comfortably idle away their waiting time. A small AV nook with a LCD unit and sound system serves as a visual medium to expound medical procedures and processes to the visitors.



Bhakti Pote, Gaurav Sanghavi, Pragya Sanghavi and Harsh Pote





“To retain the open spatial feel, give both doctors their personal space, and separate the patients as they move in, the cabins have been relegated to two corners on opposite ends of the waiting room. Connective corridors link the waiting rooms to the other OPD cabins like the pediatric and sonography units”, informs Pragya Sanghavi, Director, Pentaspace Design Studio.

Sweeping right through the clinic and into the private cabins is the calming pastel tonality that adds subtle colour and warmth to the space. Eschewing loud or overpowering hues, the colour palette of peach, white and light green aligns with the peaceful feeling that emanates within the space, balancing out the bouts of anxiety and nervousness that visitors may be dealing with. “A space as sensitive and high traffic as a medical clinic comes with an array of requirements, challenges, and even opportunities. Aspects like flow of light, availability of adequate storage and use of low maintenance materials dictated many of the design details, including use of paint and laminate that can be wiped down, stain resistant flooring, and refurbished wooden doors with hazed glass panels to let sunlight filter into the rooms”, concludes Bhakti. All in all, the thoughtful, coherent, and carefully considered design ensures that the space neither looks like a clinic, nor feels like one.

Photography: Sagar Karnik Photography